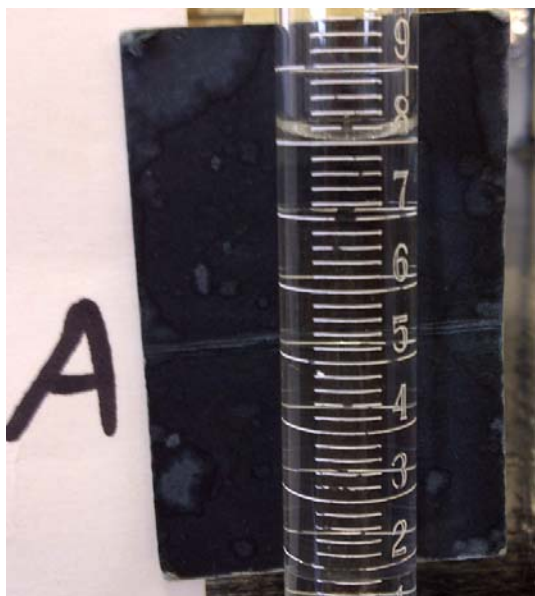


2011 - CHEM 0011 – Graduated cylinder readings

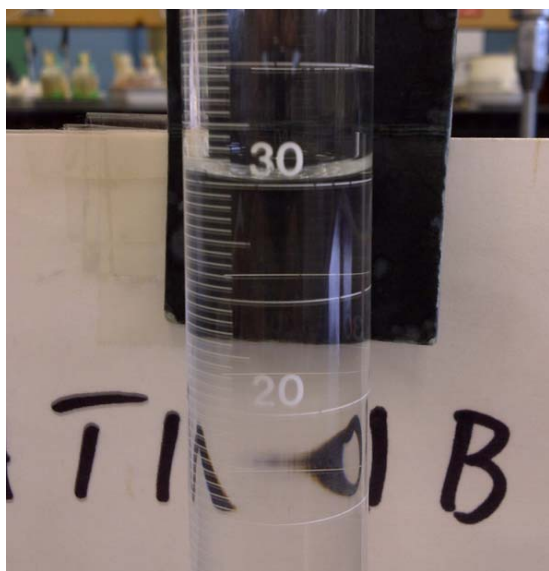


Station A:

Finest division: 0.2 mL

Estimate to within half: 0.1 mL

Reading: 8.0 mL



Station B:

Finest division: 0.5 mL

Estimate to within half: 0.2 mL

Reading: 30.2 mL



Station C:

Finest division: 0.5 mL

Estimate to within half: 0.2 mL

Reading: 11.8 mL or 12.0 mL